

BTS Skytrain

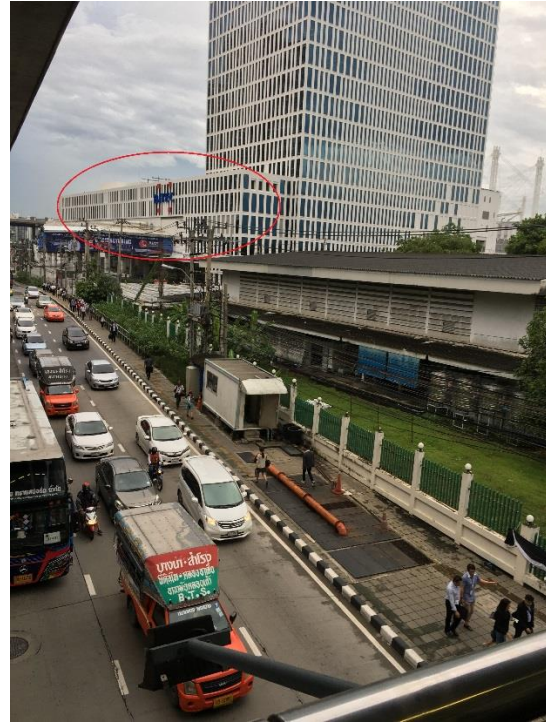
A Rabbit card is a contactless stored value card for public transit use on BTS Skytrains, buses and other mass transit systems in Thailand. You can get a Rabbit card at any BTS Ticket office. Click [here](#) for more information.

If you are travelling with the **BTS Skytrain**, you should alight at "**Bang Na Station**".

1) From Bang Na Station, go to Exit 1.



2) Cross the pedestrian bridge. You will see BITEC on the left.



3) From the bridge, turn left and walk along the pavement. You will see the BITEC entrance on the right.





Click [here](#) for more information on the venue, BITEC.